



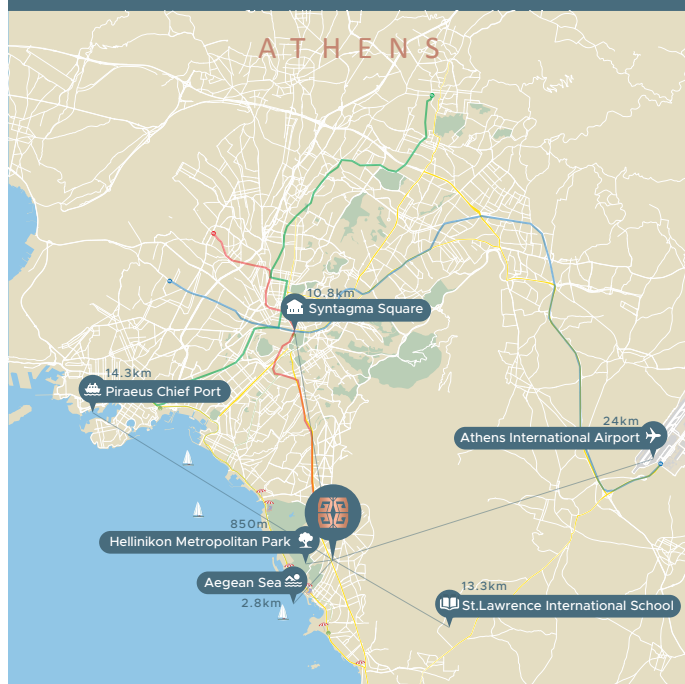
GLYFADA IMPERIAL RESIDENCE

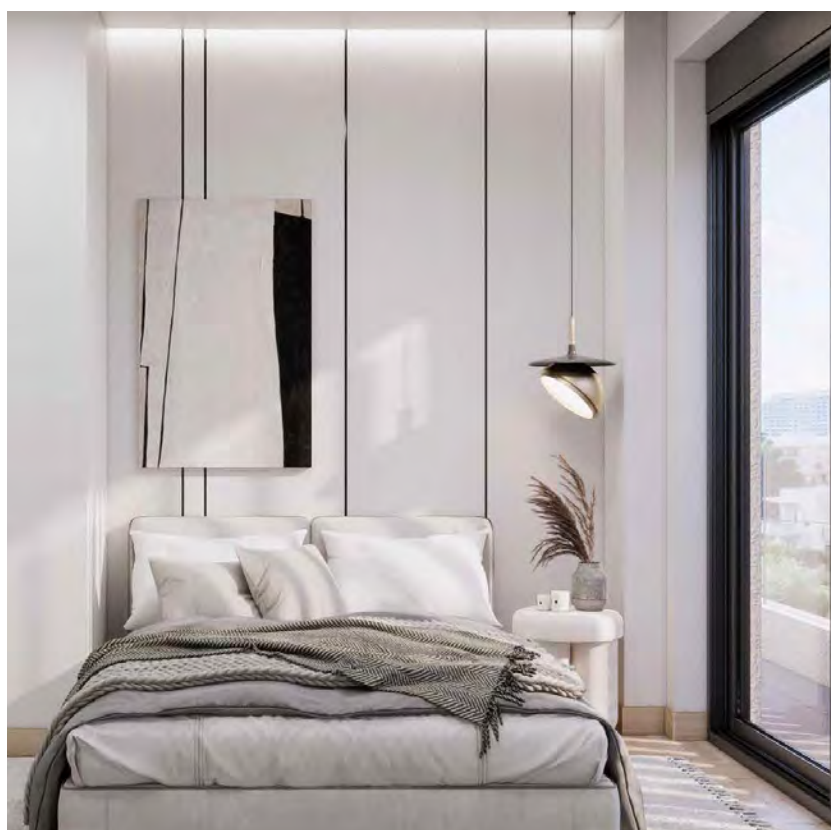
ATHENS SEASIDE



PRIME LOCATION

Located in the luxurious southern suburbs of Athens, **Glyfada** is only about a half-hour drive from the city center. With lovely beaches, Michelin stars restaurants and many high-end stores, this is where many dream of moving in order to combine the best of city-living with all that the coast has to offer.



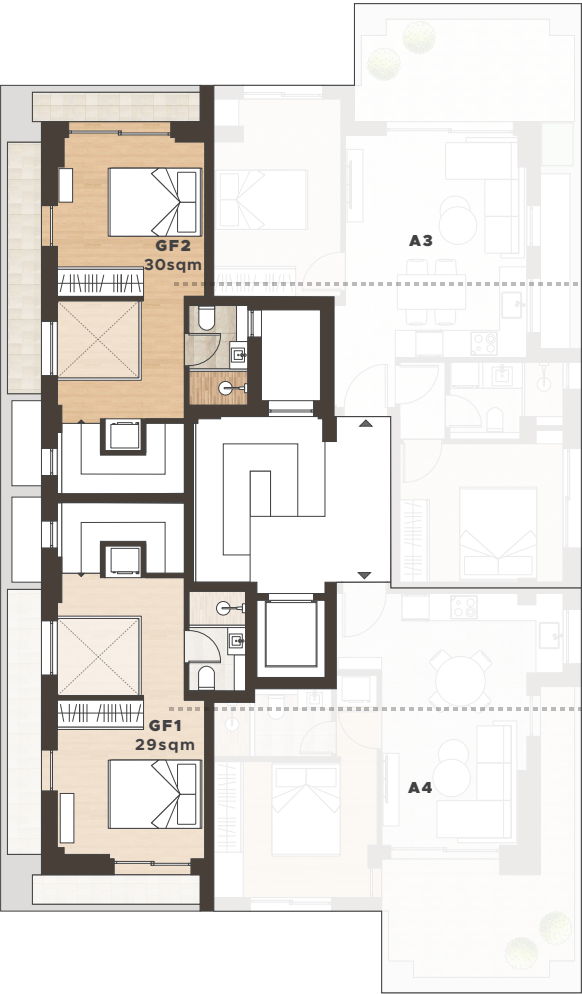


Garden Loft

G/F & 1st Floor

GF2

Bedroom	1
Bathroom	2
Covered Area	64 sqm
Balcony	8 sqm
Garden	38 sqm
Total Area	110 sqm



Garden Loft

G/F & 1st Floor

GF1

Bedroom	1
Bathroom	2
Covered Area	63 sqm
Balcony	8.5 sqm
Garden	37 sqm
Total Area	108.5 sqm



Tzavela Str.

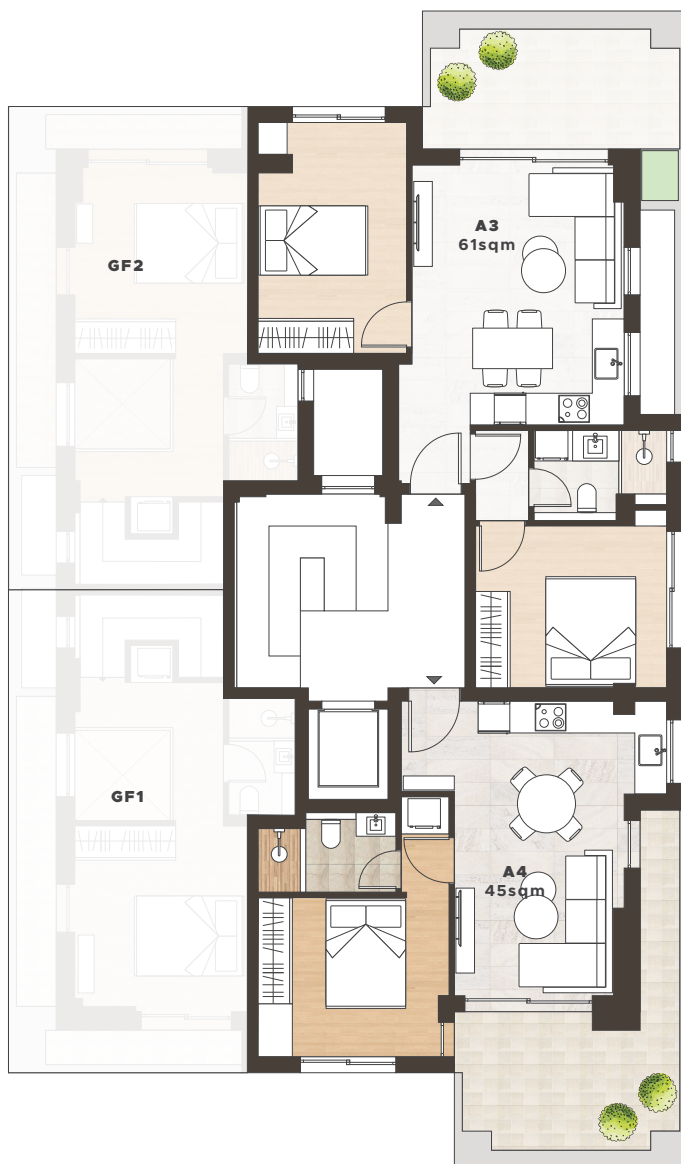


2 Bedroom Apartment

1st Floor

A3

Bedroom	2
Bathroom	1
Covered Area	61 sqm
Balcony	12 sqm
Total Area	73 sqm



Tzavela Str.



1 Bedroom Apartment

1st Floor

A4

Bedroom	1
Bathroom	1
Covered Area	45 sqm
Balcony	15 sqm
Total Area	60 sqm

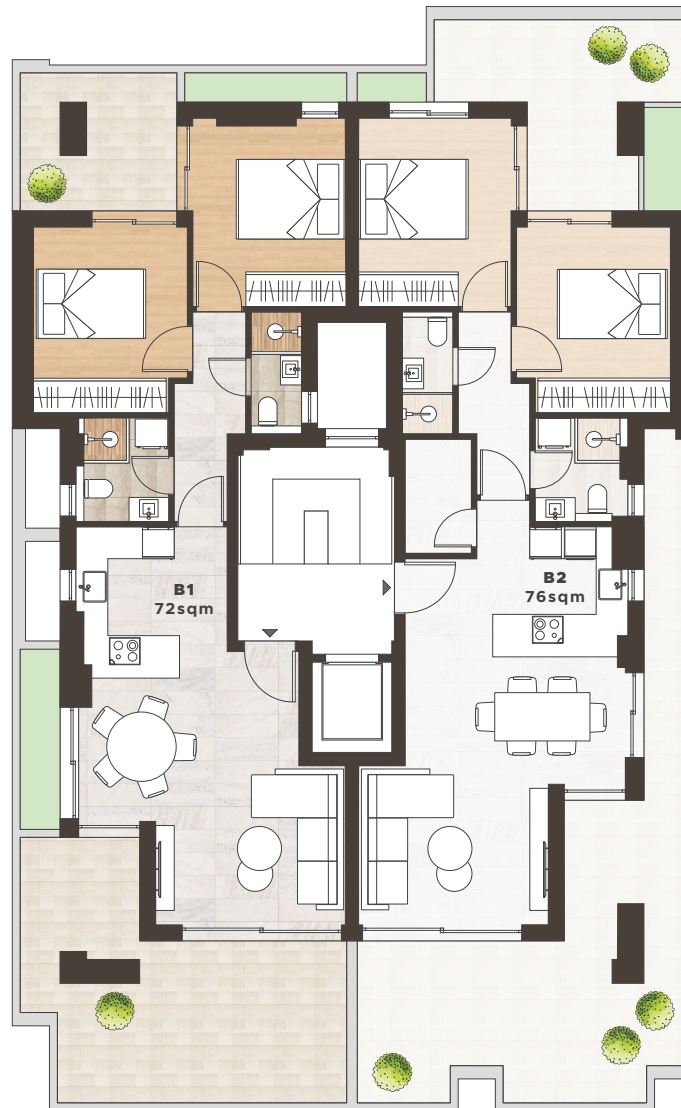


2 Bedroom Apartment

2nd Floor

B1

Bedroom	2
Bathroom	2
Covered Area	72 sqm
Balcony	32.5 sqm
Total Area	104.5 sqm



Tzavela Str.



2 Bedroom Apartment

2nd Floor

B2

Bedroom	2
Bathroom	2
Covered Area	76 sqm
Balcony	45 sqm
Total Area	121 sqm



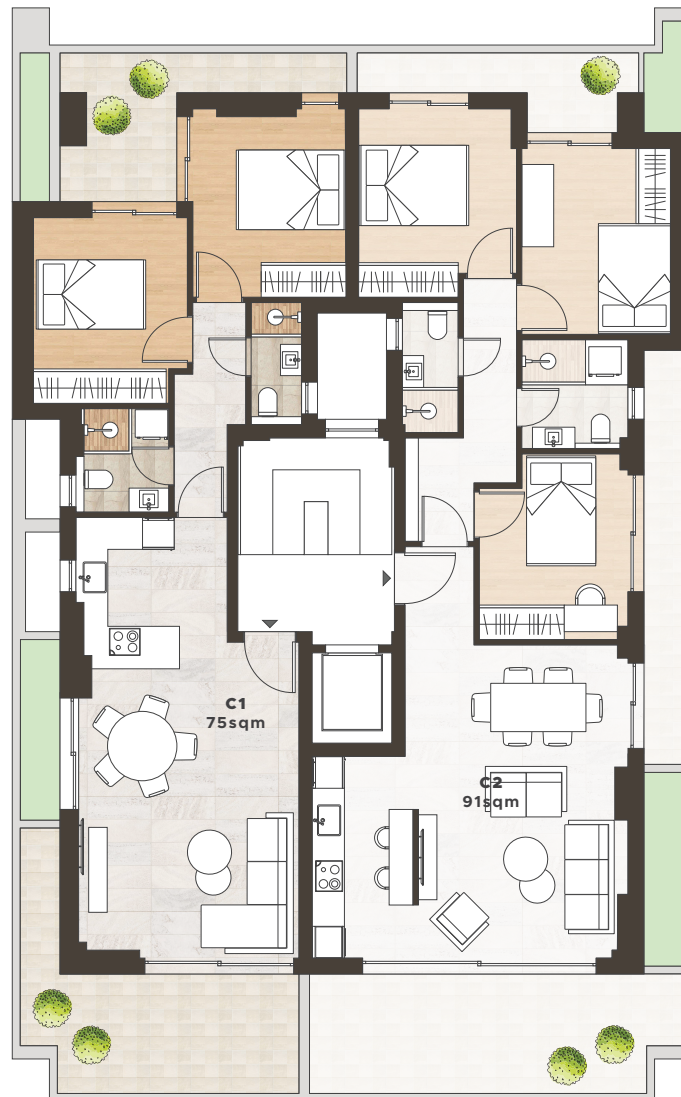


2 Bedroom Apartment

3rd Floor

C1

Bedroom	2
Bathroom	2
Covered Area	75 sqm
Balcony	25 sqm
Total Area	100 sqm



Tzavela Str.



3 Bedroom Apartment

3rd Floor

C2

Bedroom	3
Bathroom	2
Covered Area	91 sqm
Balcony	31 sqm
Total Area	122 sqm

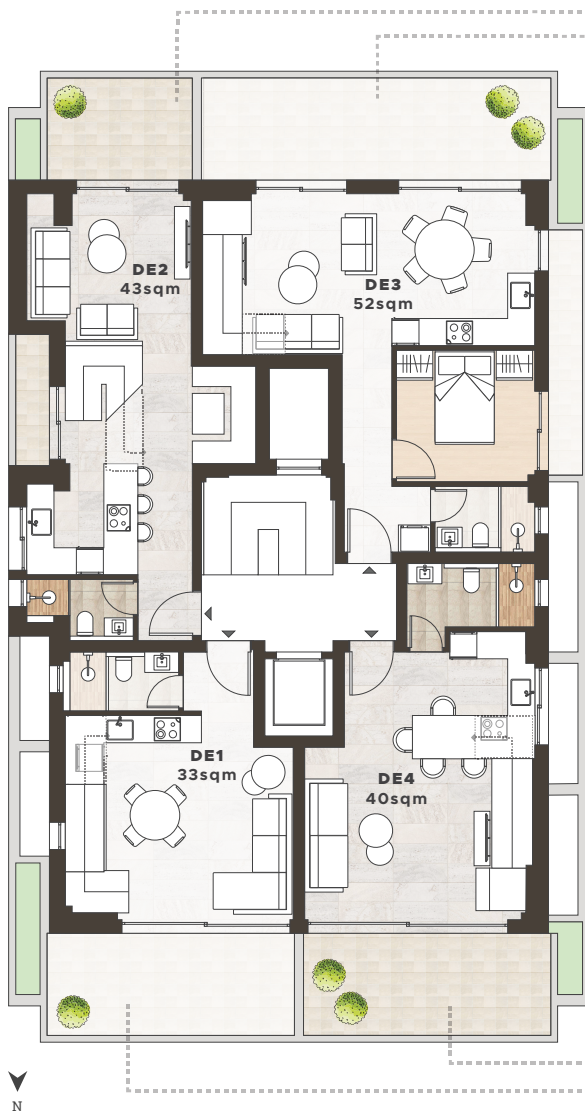


2 Bedroom Duplex

4th & 5th Floor

DE2

Bedroom	2
Bathroom	2
Covered Area	81 sqm
Balcony	17 sqm
Total Area	98 sqm



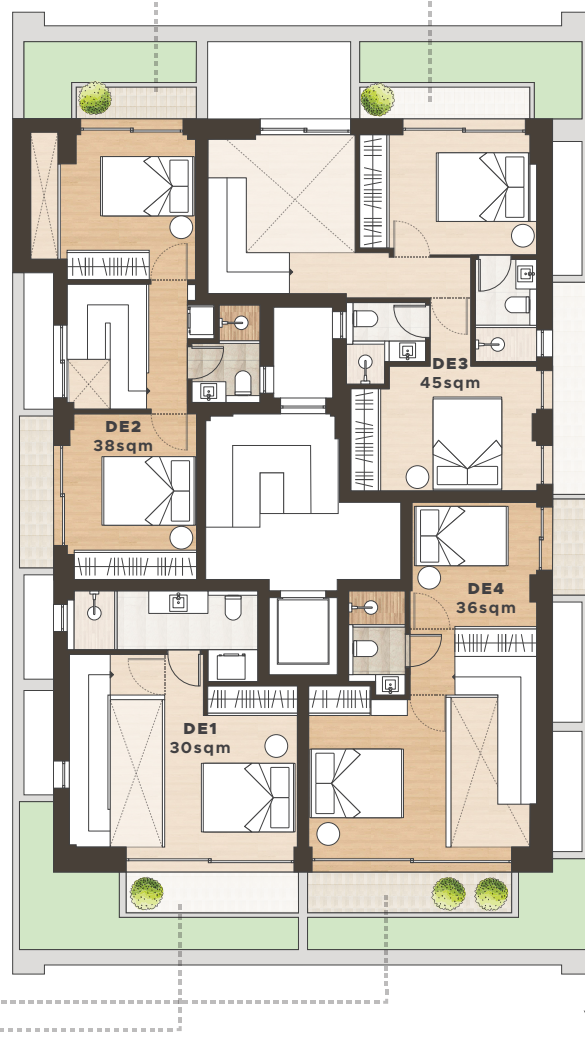
Tzavela Str.

3 Bedroom Duplex

4th & 5th Floor

DE3

Bedroom	3
Bathroom	3
Covered Area	97 sqm
Balcony	32 sqm
Private Roof Terrace	25 sqm
Total Area	154 sqm



1 Bedroom Duplex

4th & 5th Floor

DE1

Bedroom	1
Bathroom	2
Covered Area	63 sqm
Balcony	18 sqm
Total Area	81 sqm

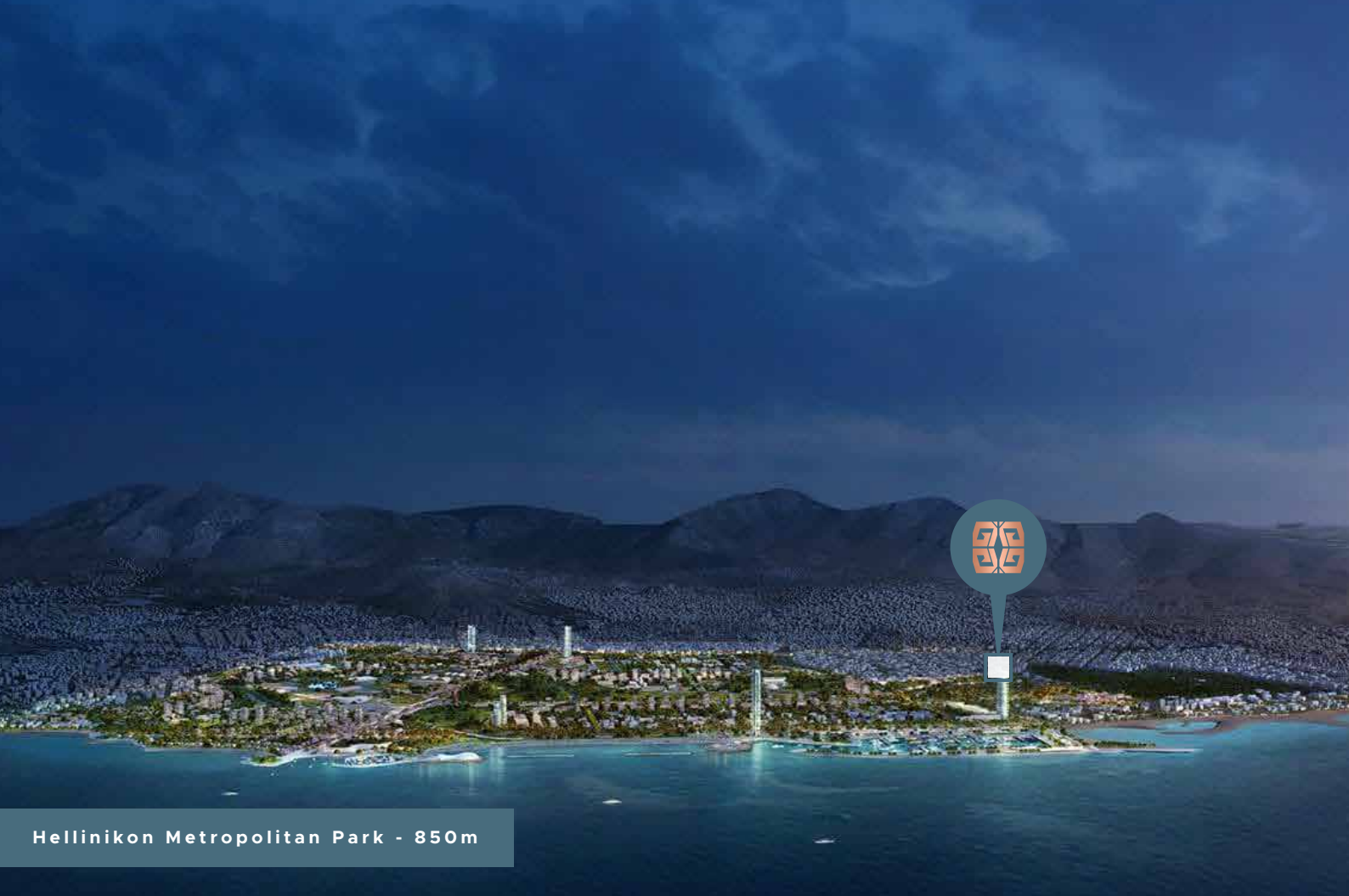


2 Bedroom Duplex

4th & 5th Floor

DE4

Bedroom	2
Bathroom	2
Covered Area	76 sqm
Balcony	20.5 sqm
Total Area	96.5 sqm



Hellinikon Metropolitan Park - 850m

UNIT SUMMARY

Unit	Floor	Type	Beds	Baths	Total Area (sqm)	Covered Area (sqm)	Balcony (sqm)	Garden/ Roof Terrace (sqm)	Parking/Storage	Garden & Swimming Pool
GF1	G/F - 1st	Garden Loft	1	2	108.5	63 (34+29)	8.5	37	Additional Charge	Yes (Communal)
GF2	G/F - 1st	Garden Loft	1	2	110	64 (34+30)	8	38	Additional Charge	Yes (Communal)
A3	1st	Apartment	2	1	73	61	12	-	Additional Charge	Yes (Communal)
A4	1st	Apartment	1	1	60	45	15	-	Additional Charge	Yes (Communal)
B1	2nd	Apartment	2	2	104.5	72	32.5	-	Additional Charge	Yes (Communal)
B2	2nd	Apartment	2	2	121	76	45	-	Additional Charge	Yes (Communal)
C1	3rd	Apartment	2	2	100	75	25	-	Additional Charge	Yes (Communal)
C2	3rd	Apartment	3	2	122	91	31	-	Additional Charge	Yes (Communal)
DE1	4th - 5th	Duplex	1	2	81	63 (33+30)	18	-	Additional Charge	Yes (Communal)
DE2	4th - 5th	Duplex	2	2	98	81 (43+38)	17	-	Additional Charge	Yes (Communal)
DE3	4th -5th	Duplex	3	3	154	97 (52+45)	32	25	Additional Charge	Yes (Communal)
DE4	4th -5th	Duplex	2	2	96.5	76 (40+36)	20.5	-	Additional Charge	Yes (Communal)

*Transfer Tax 3.09%

* All the above floor areas are subject to verification following completion.
Purchasers must therefore rely on their own inspection to verify any information provided.
All dimensions are within + or -5%



MIBS

GROUP

✉ info@mibsgroup.com

☎ +30 210 3241 740

🏠 Xenofontos 14, 10557 Athens, Greece

💻 www.mibsgroup.com